



Copy by
CONTRAPONTO
LUSITANO 
www.contraponto.lusitano.org

Manuel Mendes
(c1547-1605)

Missa Ferialis

Kyrie

Superius

Musical score for the first system, featuring four vocal parts: Superius, Altus, Tenor, and Bassus. The Superius part is in treble clef with a soprano C-clef. The Altus part is in treble clef with an alto C-clef. The Tenor part is in treble clef with a tenor C-clef. The Bassus part is in bass clef with a bass F-clef. The lyrics are: Ky - - - ri - e e - - - le - i - son.

Ky - ri - - - e e - le - i - - - son.

8

Musical score for the second system, featuring four vocal parts: Soprano (S), Alto (A), Tenor (T), and Bass (B). The Soprano part is in treble clef with a soprano C-clef. The Alto part is in treble clef with an alto C-clef. The Tenor part is in treble clef with a tenor C-clef. The Bass part is in bass clef with a bass F-clef. The lyrics are: Chri - ste - - - e - - - le - i - son.

Chris - te - - - e - - - le - i - son.

15

Musical score for the third system, featuring four vocal parts: Soprano (S), Alto (A), Tenor (T), and Bass (B). The Soprano part is in treble clef with a soprano C-clef. The Alto part is in treble clef with an alto C-clef. The Tenor part is in treble clef with a tenor C-clef. The Bass part is in bass clef with a bass F-clef. The lyrics are: Ky - - - ri - e

Ky - - - ri - - - e

21

S
e - - - le - - - i - - - son.

A
e - le - - - i - - - son.

T
e - le - - - - - - - i - son.

B
e - - - - - le - - - - - i - - - - son.

Sanctus



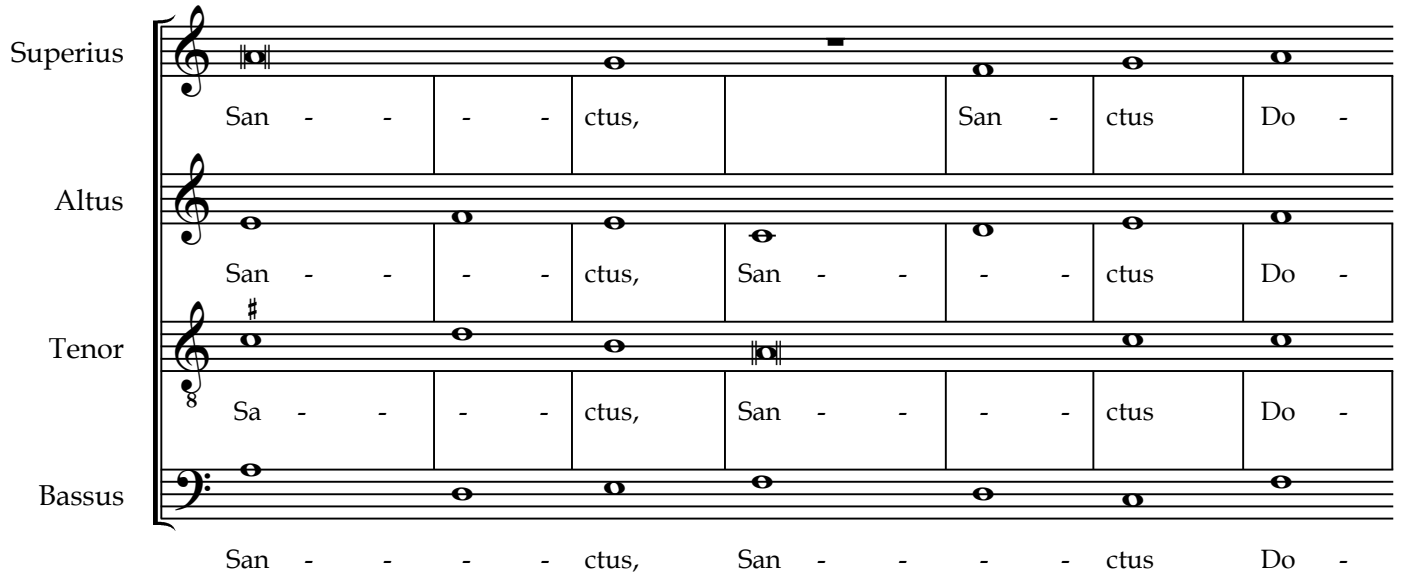
San - ctus,

Superius

Altus

Tenor

Bassus



San - - - ctus, San - ctus Do -

San - - - ctus, San - - - ctus Do -

Sa - - - ctus, San - - - ctus Do -

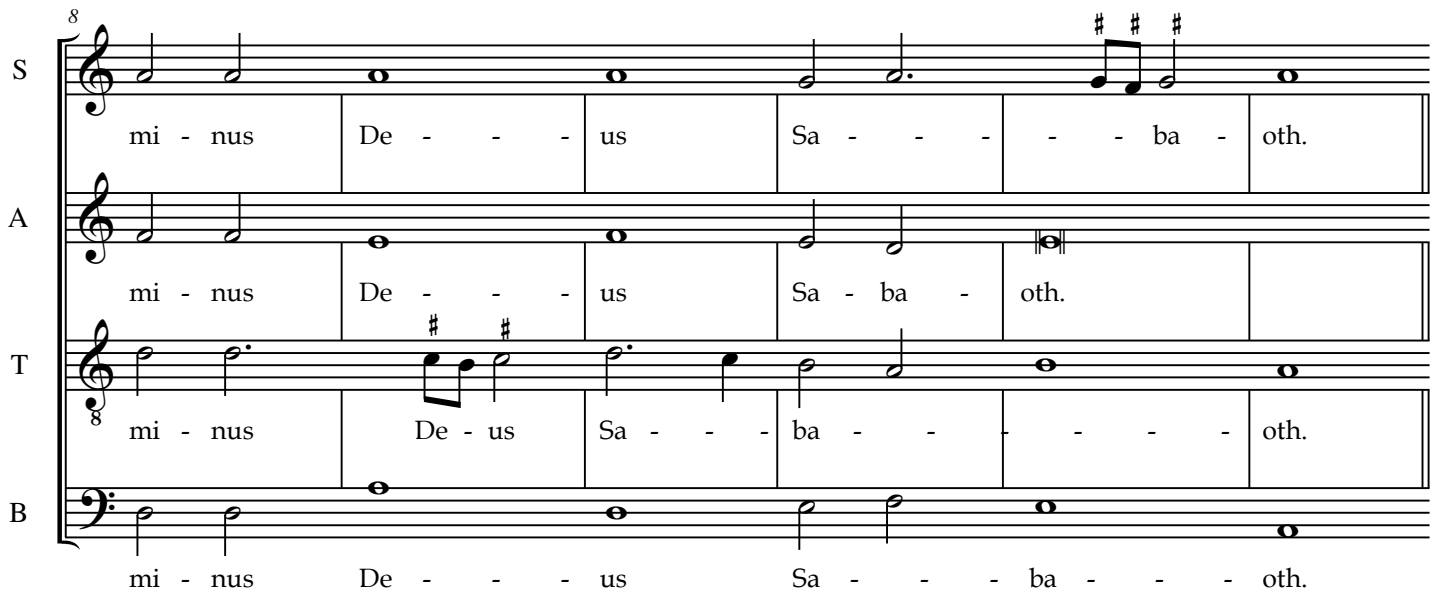
San - - - ctus, San - - - ctus Do -

S

A

T

B



mi - nus De - - - us Sa - - - ba - oth.

mi - nus De - - - us Sa - ba - oth.

mi - nus De - us Sa - - - ba - - - oth.

mi - nus De - - - us Sa - - - ba - - - oth.

Ple - ni sunt

14

S cae - li et ter - ra glo - - ri - a tu - - -

A cae - li et ter - ra glo - - ri - a - tu - - -

T cae - li et ter - - ra glo - - ri - a tu - - -

B cae - li et ter - ra glo - - ri - a tu - - -

22

S a. Ho - san - na in ex - cel - sis.

A a. Ho - - san - na in ex - cel - - - sis.

T a. Ho - san - na in ex - cel - - - sis.

B a. Ho - - sa - - na in ex - - - cel - - - sis.

Benedictus



Be- ne- di- ctus

29

S
qui ve - nit in no - - - mi - ne Do - - - mi - - -

A
qui ve - nit in no - - - mi - ne Do - - - - - mi -

T
8
qui ve - nit in no - mi - ne Do - - - mi - - -

B
qui ve - nit in no - - - mi - ne Do - - - mi - - -

36

S
ni. Ho - - - sa - na in ex - - - cel - sis.

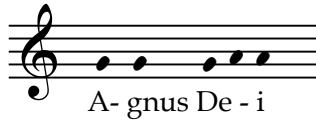
A
ni. Ho - sa - na in ex - cel - - - sis.

T
8
ni. Ho - - - sa - na in ex - cel - - - - - sis.

B
ni. Ho - - - sa - na in ex - cel - - - sis.



Agnus Dei



Superius
qui tol - lis pec - ca - - - ta mun -

Altus
qui tol - - - lis pec - - - ca - ta mun -

Tenor
8 qui tol - lis pec - ca - - - ta mun -

Bassus
qui tol - lis pec - ca - - - ta mun -

6
S di mi - - se - - - re - - - re no - - - bis. #

A di mi - - - se - re - - - re - no - - - bis.

T 8 di mi - - se - re - - - re no - - - bis.

B di mi - - se - re - - - re no - - - bis.

